

COUNTY OF MONTAGUE OCTOBER TERM 2008 REGULAR SESSION

WJ

18-230

BE IT REMEMBERED, THAT ON THIS THE 13TH DAY OF OCTOBER A.D. 2008 THERE WAS BEGUN AND BEHOLDEN A REGULAR SESSION OF THE HONORABLE Ted H. Winn, COUNTY JUDGE; Dickie Cox, COMMISSIONER PRECINCT NO.1; Jerry Clement, COMMISSIONER PRECINCT NO.2; Glenn Seay, COMMISSIONER PRECINCT NO.3; Tommie Sappington COMMISSIONER PRECINCT NO. 4; AND Glenda Henson, COUNTY CLERK AND EX-OFFICIO CLERK OF THE COMMISSIONERS' COURT, WHEN THE FOLLOWING PROCEEDINGS WERE HAD TO-WIT:

THE STATE OF TEXAS

IN THE COMMISSIONERS COURT

OCTOBER TERM, 2008

COUNTY OF MONTAGUE

REGULAR SESSION

In open meeting at the regular meeting place in the Courthouse at Montague, Texas, with all undersigned members being present, it was moved and passed by the Court as follow Montague Co. Clerk, Texas
Volume 8 Page 775

X

#08-390-PUBLIC HEARING TO VACATE A PORTION OF LAGO LANE, PCT # 4, AND IF APPROVED GIVE JUDGE WINN THE AUTHORITY TO SIGN ORDER

No one to speak on public hearing. Motion by Commissioner Sappington and seconded by Commissioner Seay to follow proper procedures to vacate road known as Lago Lane in Pct # 4 and revert land back to Keith and Carla Hightower as indicated on the attached plat.

All Voted For

Motion Carried

#08-391 -APPROVAL OF MINUTES - September 22nd, 2008, October 2nd, 2008

Motion by Commissioner Sappington and seconded by Commissioner Cox to approve the minutes as presented.

All Voted For

Motion Carried

#08-392- APPROVE MONTHLY REPORTS

Motion by Commissioner Sappington and seconded by Commissioner Clement to approve the monthly reports of the following: County Attorney, County Clerk, JP 1, JP 2, R&B 1, R&B 2, R&B 3, R&B 4, Tax Ad Valorem, Tax Auto. Report Audits: County Attorney, County Clerk, JP 1, JP 2.

All Voted For

Motion Carried

#08-393-PAY CLAIMS

Motion by Commissioner Clement and seconded by Commissioner Seay to pay the claims as presented in open court.

All Voted For

Motion Carried

#08-394-DISCUSS REQUEST BY JOEY GARDNER ON APPROVAL TO REPLAT AND SUBDIVIDE A 14.205 ACRE TRACT LOCATED ON BEACH ROAD NEAR LAKESIDE COUNTRY CLUB SUBDIVISION AND FLORAL GARDENS SUBDIVISION, PCT # 2

Motion by Commissioner Clement and seconded by Commissioner Seay to approve the replat to subdivide the tract located on Beach Road near Lakeside Country Club Subdivision and Floral Gardens Subdivision in Pct # 2, but advised Mr. Gardner to have replat displayed on mylar before could be recorded.

All Voted For

Motion Carried

#08-395-DISCUSS REQUEST BY GINGER JOHNSON OF WISE HOPE SHELTER & CRISIS CENTER ON APPROVAL TO RECEIVE PART OF THE FAMILY PROTECTION FEE THAT CAN BE USED TO PROVIDE INFORMATION AND SERVICES TO VICTIMS OF ABUSE IN MONTAGUE COUNTY.

Motion by Commissioner Sappington and seconded by Commissioner Cox to donate \$750.00 from the Family Protection Fee to the Wise Hope Shelter & Crisis Center to be used for victims of abuse in Montague County.

AND IT IS SO ORDERED. WITNESS OUR HANDS, THIS THE 13TH DAY OF OCT., 2008

Ted H. Winn
COUNTY JUDGE

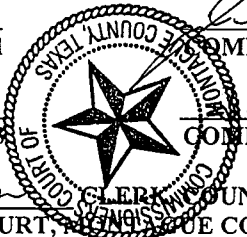
Dickie Cox
COMMISSIONER, PRECINCT #1

Jerry Clement
COMMISSIONER, PRECINCT #2

Glenn Seay
COMMISSIONER, PRECINCT #3

Tommie Sappington
COMMISSIONER, PRECINCT #4

ATTEST: *Glenda Henson*
COUNTY CLERK, COUNTY COURT AND EX-OFFICIO CLERK OF THE COMMISSIONERS' COURT, MONTAGUE COUNTY, TEXAS.



#18-230

Montague Co. Clerk, Texas
Volume 8 Page 778

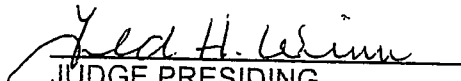
IN THE COUNTY COURT OF MONTAGUE, TEXAS

ORDER TO VACATE A PORTION OF ROAD

On this 13TH day of OCTOBER, 2008, a vacating a portion of a road was voted on by Commissioner's Court.

Now comes the Court, who hereby ORDERS, a portion of LAGO LANE, located in Precinct #4, Montague County, Texas, be VACATED.

SIGNED AND ENTERED this the 13 day of October, 2008


JUDGE PRESIDING

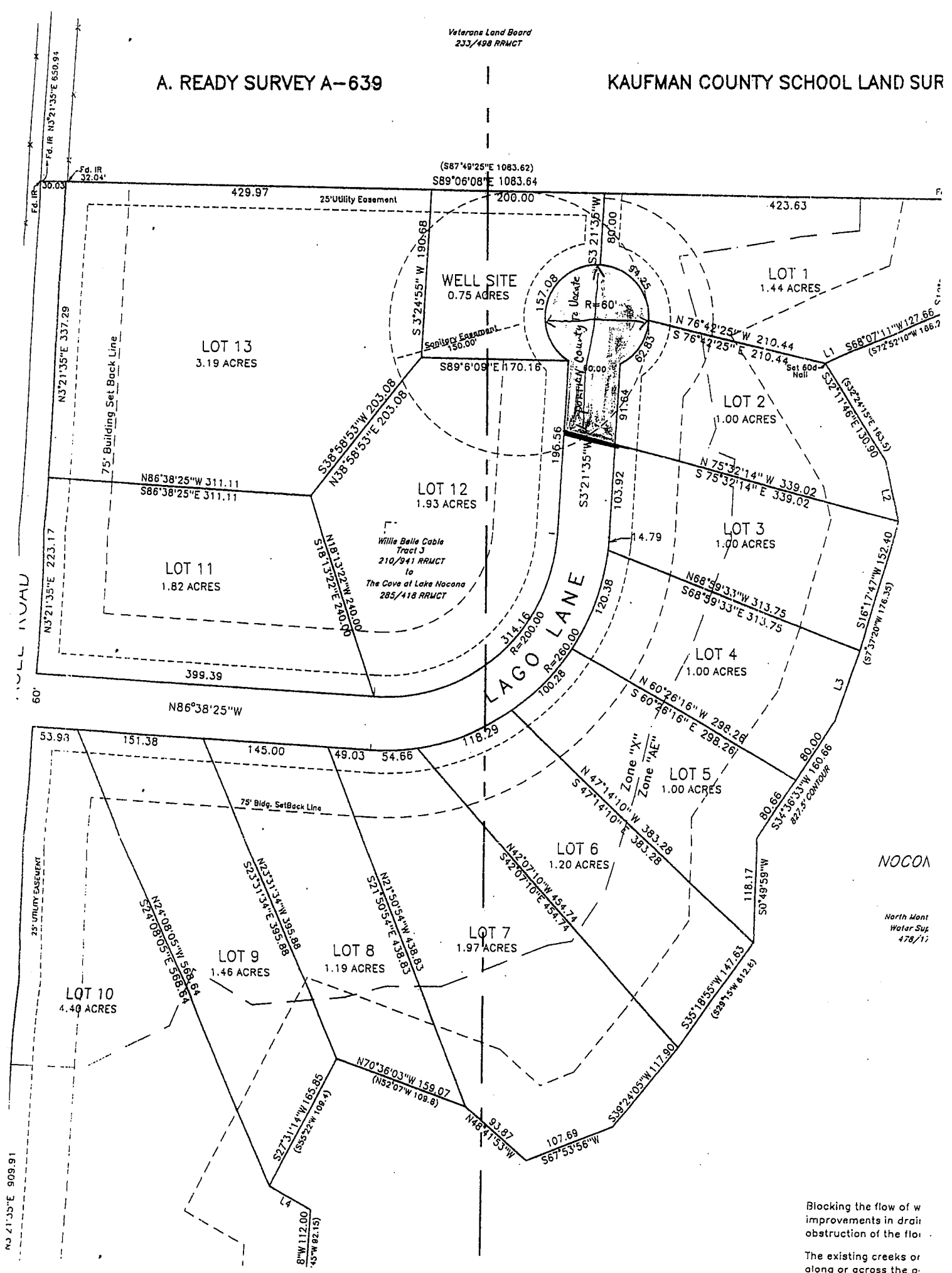
W

WJ
#18-230

Veterans Land Board
233/498 RRWCT

A. READY SURVEY A-639

KAUFMAN COUNTY SCHOOL LAND SUR



NOCOA

North Mont
Water Sup
478/11

Blocking the flow of w
improvements in drain
obstruction of the floi

The existing creeks or
along or across the o

STATE OF TEXAS
COUNTY OF MONTAGUE

OWNERS ACKNOWLEDGMENT
AND DEDICATION

I, the undersigned, owner of the land shown on this plat within the area described by metes and bounds as follows:

Field Notes For:

A 26.00 acre tract of land in Block 4 Kaufman County School Land Survey A-407 and the A. Ready Survey A-639, Montague County, Texas and being the same tract described as tract three in deed to Willie Belle Cable recorded in Volume 210, Page 941, Real Records, Montague County, Texas and being more particularly described as follows:

BEGINNING at an iron rod found in a County Road and in the east line of a tract of land described in deed to Willard Grigsby recorded in Volume 413, Page 17, Deed-Records, Montague County, Texas and for the southwest corner of a tract of land described in deed to Veterans Land Board recorded in Volume 233, Page 498, Real Records, Montague County, Texas and for the northwest corner of said Cable tract;

THENCE South 89°08'08" East at 32.04 feet pass an iron rod found in the east line of said road as fenced and continuing in all 1083.64 feet to an iron rod found on the 827.5 foot elevation contour of Lake Nocona and for the southeast corner of said Veterans Land Board tract and for the northeast corner of said Cable tract;

THENCE the following calls along the 827.5 foot elevation contour of Lake Nocona:

- South 12°22'34" West 130.86 feet to a sixty penny nail found for corner;
- South 68°07'11" West 127.66 feet to a sixty penny nail set for corner;
- South 64°55'37" West 22.72 feet to a sixty penny nail set for corner;
- South 32°11'46" East 130.90 feet to a sixty penny nail set for corner;
- South 12°54'10" East 68.85 feet to a sixty penny nail set for corner;
- South 16°17'47" West 152.40 feet to a sixty penny nail set for corner;
- South 19°26'19" West 85.93 feet to a sixty penny nail set for corner;
- South 34°36'33" West 160.66 feet to a sixty penny nail set for corner;
- South 00°49'59" West 118.17 feet to a sixty penny nail set for corner;
- South 35°18'55" West 147.63 feet to a sixty penny nail set for corner;
- South 39°24'05" West 117.90 feet to a sixty penny nail set for corner;
- South 67°53'56" West 107.69 feet to a sixty penny nail set for corner;
- North 48°41'53" West 93.87 feet to a sixty penny nail set for corner;
- North 70°38'03" West 159.07 feet to a sixty penny nail set for corner;
- South 27°31'14" West 165.85 feet to a sixty penny nail set for corner;
- South 60°37'22" East 55.22 feet to a sixty penny nail set for corner;

South 03°35'18" West 112.00 feet to an iron rod set for the north corner of a tract of land described as tract one in deed to Mary Sue Agee recorded in Volume 210, Page 941, Real Records, Montague County, Texas and for the most southerly southeast corner of said Cable tract;

THENCE South 56°59'30" West at 454.38 feet pass an iron rod set for reference in the east line of said road as fenced and continuing in all 491.38 feet to an iron rod set in the east line of said Grigsby tract and for the northwest corner of said Agee tract and for the southwest corner of said Cable tract;

THENCE North 03°21'35" East with said road and the east line of said Grigsby tract 1551.18 feet to the POINT OF BEGINNING.

and designated herein as the COVE AT LAKE NOCONA subdivision to Montague County, Texas and whose name is subscribed hereto, hereby Dedicate to the use of the public forever all streets, alleys, parks, water courses, drains, easements, right-of-way and public places thereon shown for the purpose and consideration therein expressed.

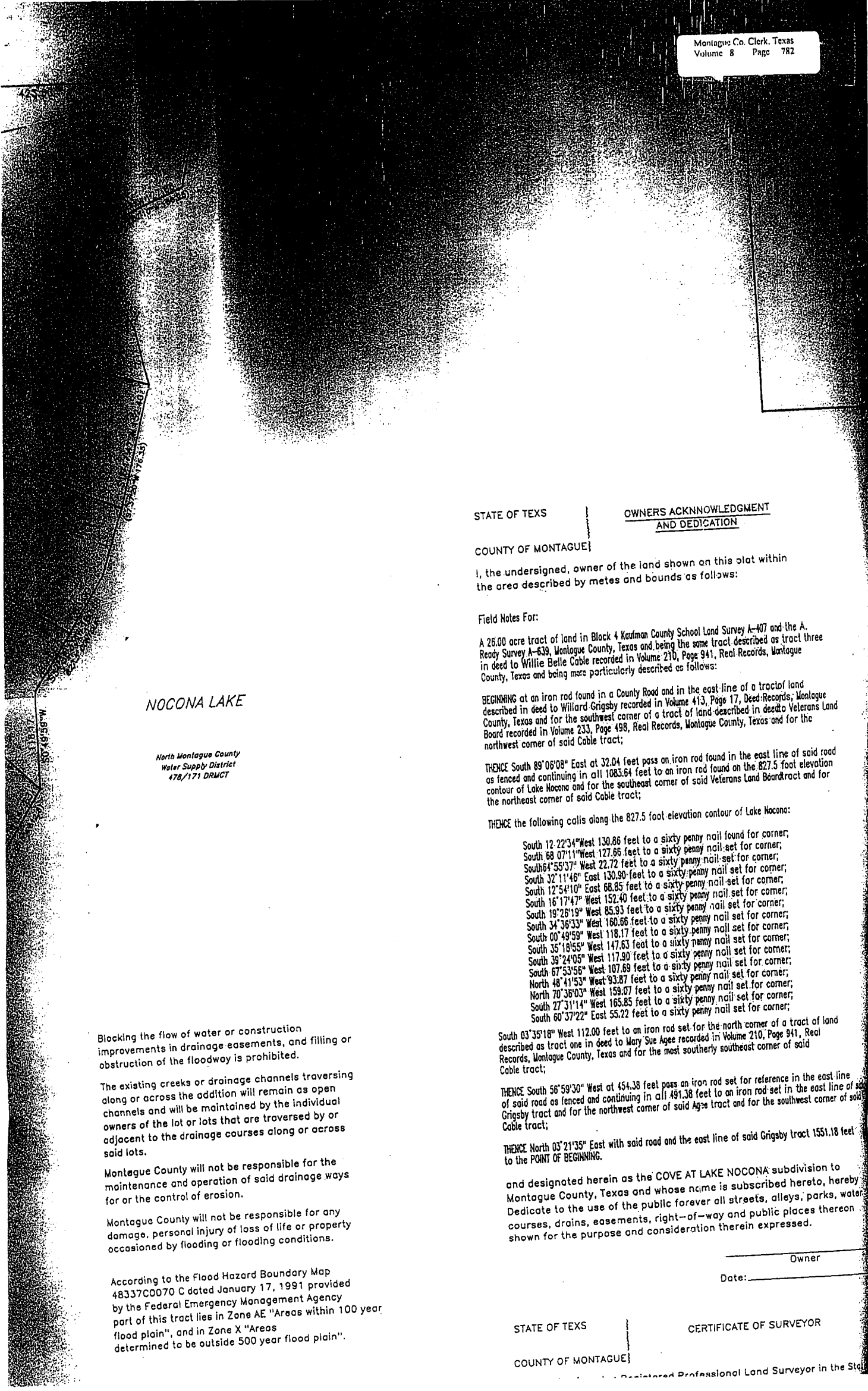
Owner _____
Date: _____

STATE OF TEXAS
COUNTY OF MONTAGUE

CERTIFICATE OF SURVEYOR

Registered Professional Land Surveyor in the State of Texas

WJ



NOCONA LAKE

North Montague County
Water Supply District
478/171 DRMCT

Blocking the flow of water or construction improvements in drainage easements, and filling or obstruction of the floodway is prohibited.

The existing creeks or drainage channels traversing along or across the addition will remain as open channels and will be maintained by the individual owners of the lot or lots that are traversed by or adjacent to the drainage courses along or across said lots.

Montague County will not be responsible for the maintenance and operation of said drainage ways for or the control of erosion.

Montague County will not be responsible for any damage, personal injury or loss of life or property occasioned by flooding or flooding conditions.

According to the Flood Hazard Boundary Map 48337C0070 C dated January 17, 1991 provided by the Federal Emergency Management Agency part of this tract lies in Zone AE "Areas within 100 year flood plain", and in Zone X "Areas determined to be outside 500 year flood plain".